

# SYSTEMS GUIDE

 BUILDING RENEWAL™ SYSTEMS GUIDE



**BUILDING RENEWAL™**  
PAINT RESTORATION & RENOVATION PROGRAM

## WORK WITH AN INDUSTRY LEADER

PPG Industries' vision is to continue to be the world's leading coatings and specialty products company. Founded in 1883, the company serves customers in industrial, transportation, consumer products and construction markets and aftermarkets. With headquarters in Pittsburgh, PPG operates in more than 60 countries around the globe. Sales in 2010 were \$13.4 billion. PPG shares are traded on the New York Stock Exchange (symbol: PPG). For more information, visit [www.ppg.com](http://www.ppg.com).

## COATINGS THAT MEET YOUR NEEDS

Building owners, facility managers, architects and contractors choose PPG Building Renewal™ products when they need to restore and protect their buildings. Whether you are looking for the latest technology, exceptional color and gloss retention, surface tolerance or chalk resistance, PPG *Building Renewal* Coatings offer the versatility to meet your needs.

## QUALITY THAT MEETS THE MOST DEMANDING APPLICATIONS

PPG's complete line of primers, intermediate coatings and topcoat finishes are designed to meet both restoration industry and customer requirements and have been proven effective in the most demanding applications.



## HOW TO USE THIS GUIDE

The paint systems detailed in this guide are representative of the many types of *Building Renewal Coatings* available for restoration projects. Each system listed specifies the substrate, technology, recommended surface preparation and number of coats.

### Before selecting a coating system, consider the following factors:

- Environmental conditions and exposure
- Substrate type and degree of surface preparation that can be performed
- The life expectancy and economics of the coating system
- Location of the project and VOC regulations for the respective region

### You can either select a system by substrate or technology

The following substrates are included in this guide along with recommended coating systems:

- PVDF Coated Aluminum and Steel
- Aluminum
- Steel
- Weathered Galvanized Steel
- Galvanized Steel
- Previously Coated Metal (Non PVDF)
- Ferrous Metal
- Tightly Adhered Rust
- Concrete, Masonry, Stucco, Plaster, Drywall
- Concrete, Masonry, Stucco, Plaster
- Concrete, Masonry, Stucco
- Concrete, Masonry
- Concrete Masonry Units (CMU)
- Concrete, Masonry, Brick, Stone, Stucco and Exposed Aggregate
- Laitant Concrete
- Tilt-Up Concrete

To select coatings based on technology, reference the color-coded system throughout this guide:

- F** • BLACK are fluoropolymers
- E** • GREEN are epoxies
- U** • RED are urethanes
- S** • GOLD are specialty coatings
- A** • BLUE are water-borne acrylics

Use this guide for reference only. For additional technical information, call PPG Technical Services at 1-800-441-9695 or contact your local PPG sales representative.

## METAL SUBSTRATES

PRIMER	INTERMEDIATE	TOPCOAT	PVDF COATED ALUMINUM AND STEEL			
			SURFACE PREPARATION	PRIMER	INTERMEDIATE	TOPCOAT
E	○	F	Solvent clean per SSPC-SP 1. Abrade substrate to remove gloss and obtain minimum surface profile of 1.0 mil. Solvent wipe to remove dust.	Coraflon® PVDF Bonding Primer ADS510 Series		Coraflon® ADS Intermix Topcoat
E	F	F	Solvent clean per SSPC-SP 1. Abrade substrate to remove gloss and obtain minimum surface profile of 1.0 mil. Solvent wipe to remove dust.	Coraflon® PVDF Bonding Primer ADS510 Series	Coraflon® ADS Barrier Coat ADS564	Coraflon® ADS Intermix Topcoat
E	U	F	Solvent clean per SSPC-SP 1. Abrade substrate to remove gloss and obtain minimum surface profile of 1.0 mil. Solvent wipe to remove dust.	Coraflon® PVDF Bonding Primer ADS510 Series	Coraflon® ADS Urethane Mastic DTM ADS650 Series	Coraflon® ADS Intermix Topcoat
E	○	F	Solvent clean per SSPC-SP 1. Abrade substrate to remove gloss and obtain minimum surface profile of 1.0 mil. Solvent wipe to remove dust.	Coraflon® PVDF Bonding Primer ADS510 Series		Duranar® ADS Topcoat

PRIMER	INTERMEDIATE	TOPCOAT	ALUMINUM			
			SURFACE PREPARATION	PRIMER	INTERMEDIATE	TOPCOAT
S	E	F	Solvent clean per SSPC-SP 1. Minimum surface preparation SSPC-SP 2/SP 3 Hand Tool/Power Tool Clean. Solvent wipe to remove dust.	Coraflon® ADS Wash Primer ADS225/ADS226	Coraflon® Epoxy Intermediate Primer ADS573/574 Series	Coraflon® ADS Intermix Topcoat
E	F	F	Solvent clean per SSPC-SP 1. Abrade substrate to remove gloss and obtain minimum surface profile of 1.0 mil. Solvent wipe to remove dust.	Coraflon® Epoxy Intermediate Primer ADS573/574 Series	Coraflon® ADS Barrier Coat ADS564	Coraflon® ADS Intermix Topcoat
E	○	F	Solvent clean per SSPC-SP 1. Abrade substrate to remove gloss and obtain minimum surface profile of 1.0 mil. Solvent wipe to remove dust.	Coraflon® Epoxy Intermediate Primer ADS573/574 Series		Coraflon® ADS Intermix Topcoat
S	E	F	Solvent clean per SSPC-SP 1. Minimum surface preparation SSPC-SP 2/SP 3 Hand Tool/Power Tool Clean. Solvent wipe to remove dust.	Coraflon® ADS Wash Primer ADS225/ADS226	Coraflon® Epoxy Intermediate Primer ADS573/574 Series	Duranar® ADS Topcoat
E	○	F	Solvent clean per SSPC-SP 1. Abrade substrate to remove gloss and obtain minimum surface profile of 1.0 mil. Solvent wipe to remove dust.	Coraflon® Epoxy Intermediate Primer ADS573/574 Series		Duranar® ADS Topcoat
E	○	U	Solvent clean per SSPC-SP 1. Abrade substrate to remove gloss and obtain minimum surface profile of 1.0 mil. Solvent wipe to remove dust.	Coraflon® Epoxy Intermediate Primer ADS573/574 Series		BRP Low VOC Urethane and Urethane (Satin and Gloss)
A	○	A	Solvent clean per SSPC-SP 1. Abrade substrate to remove gloss and obtain minimum surface profile of 1.0 mil. Solvent wipe to remove dust.	BRP Acrylic Primer 100% Acrylic BRP4912 or BRP4909		BRP Acrylic Satin and Gloss

F Fluoropolymers

U Urethanes

A Water-Borne Acrylics

E Epoxies

S Specialty Coatings

○ N/A

PRIMER	INTERMEDIATE	TOPCOAT	STEEL			
			SURFACE PREPARATION	PRIMER	INTERMEDIATE	TOPCOAT
E	○	F	Commercial blast per SSPC-SP 6. Minimum surface preparation SSPC-SP 2/SP 3 Hand Tool/Power Tool Clean.	Coraflo <sup>®</sup> Epoxy Intermediate Primer ADS573/574 Series <i>ADS225 Wash primer may be needed in inaccessible areas where blasting is impractical</i>		Coraflo <sup>®</sup> ADS Intermix Topcoat
E	F	F	Commercial blast per SSPC-SP 6. Minimum surface preparation SSPC-SP 2/SP 3 Hand Tool/Power Tool Clean.	Coraflo <sup>®</sup> Epoxy Intermediate Primer ADS573/574 Series <i>ADS225 Wash primer may be needed in inaccessible areas where blasting is impractical</i>	Coraflo <sup>®</sup> ADS Barrier Coat ADS564	Coraflo <sup>®</sup> ADS Intermix Topcoat
E	○	U	Commercial blast per SSPC-SP 6. Minimum surface preparation SSPC-SP 2/SP 3 Hand Tool/Power Tool Clean.	Coraflo <sup>®</sup> Epoxy Intermediate Primer ADS573/574 Series <i>ADS225 Wash primer may be needed in inaccessible areas where blasting is impractical</i>		Coraflo <sup>®</sup> ADS Urethane Mastic DTM ADS650
E	○	F	Commercial blast per SSPC-SP 6. Minimum surface preparation SSPC-SP 2/SP 3 Hand Tool/Power Tool Clean.	Coraflo <sup>®</sup> Epoxy Intermediate Primer ADS573/574 Series <i>ADS225 Wash primer may be needed in inaccessible areas where blasting is impractical</i>		Duranar <sup>®</sup> ADS Topcoat
E	○	U	Commercial blast per SSPC-SP 6. Minimum surface preparation SSPC-SP 2/SP 3 Hand Tool/Power Tool Clean.	Coraflo <sup>®</sup> Epoxy Intermediate Primer ADS573/574 Series <i>ADS225 Wash primer may be needed in inaccessible areas where blasting is impractical</i>		BRP Low VOC Urethane and Urethane (Satin and Gloss)
A	○	A	Commercial blast per SSPC-SP 6. Minimum surface preparation SSPC-SP 2/SP 3 Hand Tool/Power Tool Clean.	BRP Acrylic Primer 100% Acrylic BRP4912 or BRP4909 <i>ADS225 Wash primer may be needed in inaccessible areas where blasting is impractical</i>		BRP Acrylic Satin and Gloss

PRIMER	INTERMEDIATE	TOPCOAT	WEATHERED GALVANIZED STEEL			
			SURFACE PREPARATION	PRIMER	INTERMEDIATE	TOPCOAT
E	○	F	Commercial blast per SSPC-SP 6. Minimum surface preparation SSPC-SP 2/SP 3 Hand Tool/Power Tool Clean.	Coraflo <sup>®</sup> Epoxy Intermediate Primer ADS573/574 Series		Coraflo <sup>®</sup> ADS Intermix Topcoat
E	F	F	Commercial blast per SSPC-SP 6. Minimum surface preparation SSPC-SP 2/SP 3 Hand Tool/Power Tool Clean.	Coraflo <sup>®</sup> Epoxy Intermediate Primer ADS573/574 Series	Coraflo <sup>®</sup> ADS Barrier Coat ADS564	Coraflo <sup>®</sup> ADS Intermix Topcoat
E	○	U	Commercial blast per SSPC-SP 6. Minimum surface preparation SSPC-SP 2/SP 3 Hand Tool/Power Tool Clean.	Coraflo <sup>®</sup> Epoxy Intermediate Primer ADS573/574 Series		Coraflo <sup>®</sup> ADS Urethane Mastic DTM ADS650
E	○	U	Commercial blast per SSPC-SP 6. Minimum surface preparation SSPC-SP 2/SP 3 Hand Tool/Power Tool Clean.	Coraflo <sup>®</sup> Epoxy Intermediate Primer ADS573/574 Series		BRP Low VOC Urethane and Urethane (Satin and Gloss)
A	○	A	Commercial blast per SSPC-SP 6. Minimum surface preparation SSPC-SP 2/SP 3 Hand Tool/Power Tool Clean.	BRP Acrylic Primer 100% Acrylic BRP4912 or BRP4909		BRP Acrylic Satin and Gloss

The use of the Coraflo<sup>®</sup> ADS Intermix topcoat shown in the systems above may require the use of an additional barrier coat and/or clear coat depending on color selection.

The statements, technical information and recommendations for the products mentioned herein are based on best available data and practices known to PPG Architectural Coatings, Inc. at the present time.

## METAL SUBSTRATES

			GALVANIZED STEEL			
PRIMER	INTERMEDIATE	TOPCOAT	SURFACE PREPARATION	PRIMER	INTERMEDIATE	TOPCOAT
<b>E</b>	<input type="radio"/>	<b>F</b>	Abrasive blast per SSPC-SP 7/NACE 4 “brush off blasting” for removal of passivator that may be present. Obtain a surface profile of 1.0 to 2.0 mils. Ensure passivator not present.	Corafon® Epoxy Intermediate Primer ADS573/574 Series <i>ADS225 Wash primer may be needed in inaccessible areas where blasting is impractical</i>		Corafon® ADS Intermix Topcoat
<b>E</b>	<b>F</b>	<b>F</b>	Abrasive blast per SSPC-SP 7/NACE 4 “brush off blasting” for removal of passivator that may be present. Obtain a surface profile of 1.0 to 2.0 mils. Ensure passivator not present.	Corafon® Epoxy Intermediate Primer ADS573/574 Series <i>ADS225 Wash primer may be needed in inaccessible areas where blasting is impractical</i>	Corafon® ADS Barrier Coat ADS564	Corafon® ADS Intermix Topcoat
<b>E</b>	<b>U</b>	<b>F</b>	Abrasive blast per SSPC-SP 7/NACE 4 “brush off blasting” for removal of passivator that may be present. Obtain a surface profile of 1.0 to 2.0 mils. Ensure passivator not present.	Corafon® Epoxy Intermediate Primer ADS573/574 Series <i>ADS225 Wash primer may be needed in inaccessible areas where blasting is impractical</i>	Corafon® ADS Urethane Mastic DTM ADS650	Corafon® ADS Intermix Topcoat
<b>E</b>	<input type="radio"/>	<b>F</b>	Abrasive blast per SSPC-SP 7/NACE 4 “brush off blasting” for removal of passivator that may be present. Obtain a surface profile of 1.0 to 2.0 mils. Ensure passivator not present.	Corafon® Epoxy Intermediate Primer ADS573/574 Series <i>ADS225 Wash primer may be needed in inaccessible areas where blasting is impractical</i>		Duranar® ADS
<b>E</b>	<input type="radio"/>	<b>U</b>	Abrasive blast per SSPC-SP 7/NACE 4 “brush off blasting” for removal of passivator that may be present. Obtain a surface profile of 1.0 to 2.0 mils. Ensure passivator not present.	Corafon® Epoxy Intermediate Primer ADS573/574 Series <i>ADS225 Wash primer may be needed in inaccessible areas where blasting is impractical</i>		BRP Low VOC Urethane and Urethane (Satin and Gloss)
<b>A</b>	<input type="radio"/>	<b>A</b>	Solvent Clean per SSPC-SP 1 to remove grease and oils. If oxidation has formed (white rust), sand and remove all contamination. If the galvanized steel has been passivated or stabilized, the surface must be abraded per SSPC-SP 7 “brush-off blast” clean or chemically treat the surface.	BRP Acrylic Primer 100% Acrylic BRP4912 or BRP4909 <i>ADS225 Wash primer may be needed in inaccessible areas where blasting is impractical</i>		BRP Acrylic Satin and Gloss

			PREVIOUSLY COATED METAL (NON PVDF)			
PRIMER	INTERMEDIATE	TOPCOAT	SURFACE PREPARATION	PRIMER	INTERMEDIATE	TOPCOAT
<b>E</b>	<b>F</b>	<b>F</b>	Remove all loose paint. Abrade surface to remove gloss and obtain surface profile. Minimum surface preparation SSPC-SP 2/SP 3 Hand Tool/Power Tool Clean. Remaining coatings should be tested for adhesion and for lifting by the primer.	Corafon® Epoxy Intermediate Primer ADS573/574 Series	Corafon® ADS Barrier Coat ADS564	Corafon® ADS Intermix Topcoat
<b>E</b>	<input type="radio"/>	<b>F</b>	Remove all loose paint. Abrade surface to remove gloss and obtain surface profile. Minimum surface preparation SSPC-SP 2/SP 3 Hand Tool/Power Tool Clean. Remaining coatings should be tested for adhesion and for lifting by the primer.	Corafon® Epoxy Intermediate Primer ADS573/574 Series		Corafon® ADS Intermix Topcoat
<b>E</b>	<input type="radio"/>	<b>U</b>	Remove all loose paint. Abrade surface to remove gloss and obtain surface profile. Minimum surface preparation SSPC-SP 2/SP 3 Hand Tool/Power Tool Clean. Remaining coatings should be tested for adhesion and for lifting by the primer.	Corafon® Epoxy Intermediate Primer ADS573/574 Series		BRP Low VOC Urethane and Urethane (Satin and Gloss)
<b>A</b>	<input type="radio"/>	<b>A</b>	Remove all loose paint. Abrade surface to remove gloss and obtain surface profile. Minimum surface preparation SSPC-SP 2/SP 3 Hand Tool/Power Tool Clean. Remaining coatings should be tested for adhesion and for lifting by the primer.	BRP Acrylic Primer 100% Acrylic BRP4912 or BRP4909		BRP Acrylic Satin and Gloss

**F** Fluoropolymers

**U** Urethanes

**A** Water-Borne Acrylics

**E** Epoxies

**S** Specialty Coatings

N/A

PRIMER	INTERMEDIATE	TOPCOAT	FERROUS METAL			
			SURFACE PREPARATION	PRIMER	INTERMEDIATE	TOPCOAT
E	E	F	Commercial blast per SSPC-SP 6.	Coraflon® Zinc Rich Epoxy ADS570 Series	Coraflon® Epoxy Intermediate Primer ADS573/574 Series	Coraflon® ADS Intermix Topcoat
E	U	F	Commercial blast per SSPC-SP 6.	Coraflon® Zinc Rich Epoxy ADS570 Series	Coraflon® ADS Urethane Mastic DTM ADS650 Series	Coraflon® ADS Intermix Topcoat
E	U	F	Commercial blast per SSPC-SP 6. Minimum surface preparation SSPC-SP 2/SP 3 Hand Tool/Power Tool Clean.	Coraflon® Epoxy Intermediate Primer ADS573/574 Series	Coraflon® ADS Urethane Mastic DTM ADS650 Series	Coraflon® ADS Intermix Topcoat
E	F	F	Commercial blast per SSPC-SP 6. Minimum surface preparation SSPC-SP 2/SP 3 Hand Tool/Power Tool Clean.	Coraflon® Epoxy Intermediate Primer ADS573/574 Series	Coraflon® ADS Barrier Coat ADS564	Coraflon® ADS Intermix Topcoat
E		F	Commercial blast per SSPC-SP 6. Minimum surface preparation SSPC-SP 2/SP 3 Hand Tool/Power Tool Clean.	Coraflon® Epoxy Intermediate Primer ADS573/574 Series		Coraflon® ADS Intermix Topcoat
E		U	Commercial blast per SSPC-SP 6. Minimum surface preparation SSPC-SP 2/SP 3 Hand Tool/Power Tool Clean.	Coraflon® Epoxy Intermediate Primer ADS573/574 Series		BRP Low VOC Urethane and Urethane (Satin and Gloss)
A		A	Commercial blast per SSPC-SP 6. Minimum surface preparation SSPC-SP 2/SP 3 Hand Tool/Power Tool Clean.	BRP Acrylic Primer 100% Acrylic BRP4912 or BRP4909		BRP Acrylic Satin and Gloss

PRIMER	INTERMEDIATE	TOPCOAT	TIGHTLY ADHERED RUST			
			SURFACE PREPARATION	PRIMER	INTERMEDIATE	TOPCOAT
E		F	Remove all loose paint, mill scale and rust. Steel: SSPC SP-2/SP-3 Hand/Power Tool Cleaning minimum. Old coatings should be tested for adhesion of the existing system and lifting by primer and topcoat.	Coraflon® Epoxy Intermediate Primer ADS573/574 Series		Coraflon® ADS Intermix Topcoat
E		F	Remove all loose paint, mill scale and rust. Steel: SSPC SP-2/SP-3 Hand/Power Tool Cleaning minimum. Old coatings should be tested for adhesion of the existing system and lifting by primer and topcoat.	Coraflon® Epoxy Intermediate Primer ADS573/574 Series		Duranar® ADS Topcoat
E		U	Remove all loose paint, mill scale and rust. Steel: SSPC SP-2/SP-3 Hand/Power Tool Cleaning minimum. Old coatings should be tested for adhesion of the existing system and lifting by primer and topcoat.	Coraflon® Epoxy Intermediate Primer ADS573/574 Series		BRP Low VOC Urethane and Urethane (Satin and Gloss)

The use of the Coraflon ADS Intermix topcoat shown in the systems above may require the use of an additional barrier coat and/or clear coat depending on color selection.

The statements, technical information and recommendations for the products mentioned herein are based on best available data and practices known to PPG Architectural Coatings, Inc. at the present time.

## CONCRETE AND MASONRY SUBSTRATES

PRIMER	INTERMEDIATE	TOPCOAT	CONCRETE, MASONRY, STUCCO, PLASTER, DRYWALL			
			SURFACE PREPARATION	PRIMER	INTERMEDIATE	TOPCOAT
A	A	A	Prepare surface per SSPC-SP 13 to remove surface contaminants, loose paint, laitance, efflorescence, curing compounds, hardeners and bond breakers. New concrete should cure for at least seven days, and the pH of the substrate must be less than 13 before priming.	PPG PERMA-CRETE® Interior/Exterior Alkali Resistant Primer 4-603	PPG PERMA-CRETE® High Build 100% Acrylic Topcoat 4-22 series	PPG PERMA-CRETE® High Build 100% Acrylic Topcoat 4-22 series
A	A	A	Prepare surface per SSPC-SP 13 to remove surface contaminants, loose paint, laitance, efflorescence, curing compounds, hardeners and bond breakers. New concrete should cure for at least seven days, and the pH of the substrate must be less than 13 before priming.	PPG PERMA-CRETE® High Build Primer 4-2	PPG PERMA-CRETE® High Build 100% Acrylic Topcoat 4-22 series	PPG PERMA-CRETE® High Build 100% Acrylic Topcoat 4-22 series
A	○	A	Prepare surface per SSPC-SP 13 to remove surface contaminants, loose paint, laitance, efflorescence, curing compounds, hardeners and bond breakers. New concrete should cure for at least 30 days, and the pH of the substrate must be less than 10 before priming.	BRP 100% Acrylic Primer BRP491.2 or BRP4909		BRP Acrylic Latex Satin and Gloss
A	A	A	Prepare surface per SSPC-SP 13 to remove surface contaminants, loose paint, laitance, efflorescence, curing compounds, hardeners and bond breakers. New concrete should cure for at least seven days, and the pH of the substrate must be less than 13 before priming.	PPG PERMA-CRETE® Exterior Concrete and Stucco Primer 4-503	PPG PERMA-CRETE® High Build 100% Acrylic Topcoat 4-22 series	PPG PERMA-CRETE® High Build 100% Acrylic Topcoat 4-22 series

PRIMER	INTERMEDIATE	TOPCOAT	CONCRETE, MASONRY, STUCCO, PLASTER			
			SURFACE PREPARATION	PRIMER	INTERMEDIATE	TOPCOAT
A	A	A	Prepare surface per SSPC-SP 13 to remove surface contaminants, loose paint, laitance, efflorescence, curing compounds, hardeners and bond breakers. New concrete should cure for at least seven days, and the pH of the substrate must be less than 13 before priming.	PPG PERMA-CRETE® Interior/Exterior Alkali Resistant Primer 4-603	PPG PERMA-CRETE® 100% Acrylic Texture Coatings: Fine 4-50 or Medium Hard 4-60 or Medium Soft 4-65 or Coarse 4-70	PPG PERMA-CRETE® 100% Acrylic Texture Coatings: Fine 4-50 or Medium Hard 4-60 or Medium Soft 4-65 or Coarse 4-70

F Fluoropolymers

U Urethanes

A Water-Borne Acrylics

E Epoxies

S Specialty Coatings

○ N/A



PRIMER A	INTERMEDIATE A	TOPCOAT A	CONCRETE, MASONRY, STUCCO			
			SURFACE PREPARATION	PRIMER	INTERMEDIATE	TOPCOAT
A	A	A	Prepare surface per SSPC-SP 13 to remove surface contaminants, loose paint, laitance, efflorescence, curing compounds, hardeners and bond breakers. New concrete should cure for at least seven days, and the pH of the substrate must be less than 13 before priming.	PPG PERMA-CRETE® Interior/Exterior Alkali Resistant Primer 4-603	PPG PERMA-CRETE® PITT-FLEX® Elastomeric Coating– Smooth 4-110	PPG PERMA-CRETE® PITT-FLEX® Elastomeric Coating– Smooth 4-110
A	A	A	Prepare surface per SSPC-SP 13 to remove surface contaminants, loose paint, laitance, efflorescence, curing compounds, hardeners and bond breakers. New concrete should cure for at least seven days, and the pH of the substrate must be less than 13 before priming.	PPG PERMA-CRETE® Interior/Exterior Alkali Resistant Primer 4-603	PPG PERMA-CRETE® MATTE-FLEX® Elastomeric Coating– Smooth 4-310	PPG PERMA-CRETE® MATTE-FLEX® Elastomeric Coating– Smooth 4-310

PRIMER A	INTERMEDIATE ○	TOPCOAT A	CONCRETE, MASONRY			
			SURFACE PREPARATION	PRIMER	INTERMEDIATE	TOPCOAT
A	○	A	Prepare surface per SSPC-SP 13 to remove surface contaminants, loose paint, laitance, efflorescence, curing compounds, hardeners and bond breakers. New concrete should cure for at least 30 days, and the pH of the substrate must be less than 10 before priming.	Self-Priming PPG PERMA-CRETE® Color Seal™ WB Interior/ Exterior Acrylic Concrete Stain 4-4210 series*		PPG PERMA-CRETE® Color Seal™ WB Interior/Exterior Acrylic Concrete Stain 4-4210 series*
A	○	A	Prepare surface per SSPC-SP 13 to remove surface contaminants, loose paint, laitance, efflorescence, curing compounds, hardeners and bond breakers. New concrete should cure for at least seven days, and the pH of the substrate must be less than 13 before priming.	Self-Priming PPG PERMA-CRETE® Vertical Concrete Stain (VCS) 4-5110		PPG PERMA-CRETE® Vertical Concrete Stain (VCS) 4-5110

\*4-4210–In Canada, exterior use only.

All PPG PERMA-CRETE products are not available in Canada. Please contact your local PPG sales representative for details.

The statements, technical information and recommendations for the products mentioned herein are based on best available data and practices known to PPG Architectural Coatings, Inc. at the present time.

## CONCRETE AND MASONRY SUBSTRATES

PRIMER INTERMEDIATE TOPCOAT	CONCRETE MASONRY UNITS (CMU)			
	SURFACE PREPARATION	PRIMER	INTERMEDIATE	TOPCOAT
A A A	Prepare surface per SSPC-SP 13 to remove surface contaminants, loose paint, laitance, efflorescence, curing compounds, hardeners and bond breakers. New concrete should cure for at least seven days, and the pH of the substrate must be less than 13 before priming.	PPG PERMA-CRETE® Low Temperature Cure (LTC) 4-100	PPG PERMA-CRETE® Interior/Exterior Alkali Resistant Primer 4-603	Any PPG PERMA-CRETE® Topcoat
A A A	Prepare surface per SSPC-SP 13 to remove surface contaminants, loose paint, laitance, efflorescence, curing compounds, hardeners and bond breakers. New concrete should cure for at least seven days, and the pH of the substrate must be less than 13 before priming.	PPG PERMA-CRETE® Low Temperature Cure (LTC) 4-100	PPG PERMA-CRETE® High Build Primer 4-2	Any PPG PERMA-CRETE® Topcoat
S ○ S	Prepare surface per SSPC-SP 13 to remove surface contaminants, loose paint, laitance, efflorescence, curing compounds, hardeners and bond breakers. New concrete should cure for at least seven days, and the pH of the substrate must be less than 13 before priming.	PPG PERMA-CRETE® Exterior Solvent Acrylic Masonry Coating 4-9110		PPG PERMA-CRETE® Exterior Solvent Acrylic Masonry Coating 4-9110

PRIMER INTERMEDIATE TOPCOAT	CONCRETE, MASONRY, BRICK, STONE, STUCCO AND EXPOSED AGGREGATE			
	SURFACE PREPARATION	PRIMER	INTERMEDIATE	TOPCOAT
S ○ S	Prepare surface per SSPC-SP 13 to remove surface contaminants, loose paint, laitance, efflorescence, curing compounds, hardeners and bond breakers. New concrete should cure for at least 30 days, and the pH of the substrate must be less than 10 before priming.	PPG PERMA-CRETE® Aqua Pel™ Clear Water Repellent 4-6100		PPG PERMA-CRETE® Aqua Pel™ Clear Water Repellent 4-6100
A ○ A	Prepare surface per SSPC-SP 13 to remove surface contaminants, loose paint, laitance, efflorescence, curing compounds, hardeners and bond breakers. New concrete should cure for at least seven days, and the pH of the substrate must be less than 13 before priming.	PPG PERMA-CRETE® Plex-Seal™ WB Interior/Exterior Clear Sealer 4-6200*		PPG PERMA-CRETE Plex-Seal™ WB Interior/Exterior Clear Sealer 4-6200*

\*4-6200–In Canada, exterior use only.

F Fluoropolymers

U Urethanes

A Water-Borne Acrylics

E Epoxies

S Specialty Coatings

○ N/A

				LAITANT CONCRETE			
PRIMER	INTERMEDIATE	TOPCOAT	SURFACE PREPARATION				
			PRIMER	INTERMEDIATE	TOPCOAT		
S	A	A	Prepare surface per SSPC-SP 13 to remove surface contaminants, loose paint, laitance, efflorescence, curing compounds, hardeners and bond breakers. New concrete should cure for at least seven days, and the pH of the substrate must be less than 13 before priming.	PPG PERMA-CRETE® Pigmented Bonding Coat 4-898	PPG PERMA-CRETE® Interior/Exterior Alkali Resistant Primer 4-603	Any PPG PERMA-CRETE® Topcoat	
S	A	A	Prepare surface per SSPC-SP 13 to remove surface contaminants, loose paint, laitance, efflorescence, curing compounds, hardeners and bond breakers. New concrete should cure for at least seven days, and the pH of the substrate must be less than 13 before priming.	PPG PERMA-CRETE® Pigmented Bonding Coat 4-898	PPG PERMA-CRETE® High Build Primer 4-2	Any PPG PERMA-CRETE® Topcoat	
S	A	A	Prepare surface per SSPC-SP 13 to remove surface contaminants, loose paint, laitance, efflorescence, curing compounds, hardeners and bond breakers. New concrete should cure for at least seven days, and the pH of the substrate must be less than 13 before priming.	PPG PERMA-CRETE® Pigmented Bonding Coat 4-898	PPG PERMA-CRETE® Exterior Concrete and Stucco Primer 4-503	Any PPG PERMA-CRETE® Topcoat	
A	A	A	Prepare surface per SSPC-SP 13 to remove surface contaminants, loose paint, laitance, efflorescence, curing compounds, hardeners and bond breakers. New concrete should cure for at least 30 days, and the pH of the substrate must be less than 10 before priming.	PPG PERMA-CRETE® Interior/Exterior Acrylic Masonry Surface Sealer 4-808/4-809	PPG PERMA-CRETE® Interior/Exterior Alkali Resistant Primer 4-603	Any PPG PERMA-CRETE® Topcoat	
A	A	A	Prepare surface per SSPC-SP 13 to remove surface contaminants, loose paint, laitance, efflorescence, curing compounds, hardeners and bond breakers. New concrete should cure for at least 30 days, and the pH of the substrate must be less than 10 before priming.	PPG PERMA-CRETE® Interior/Exterior Acrylic Masonry Surface Sealer 4-808/4-809	PPG PERMA-CRETE® High Build Primer 4-2	Any PPG PERMA-CRETE® Topcoat	
A	A	A	Prepare surface per SSPC-SP 13 to remove surface contaminants, loose paint, laitance, efflorescence, curing compounds, hardeners and bond breakers. New concrete should cure for at least 30 days, and the pH of the substrate must be less than 10 before priming.	PPG PERMA-CRETE® Interior/Exterior Acrylic Masonry Surface Sealer 4-808/4-809	PPG PERMA-CRETE® Exterior Concrete and Stucco Primer 4-503	Any PPG PERMA-CRETE® Topcoat	

All PPG PERMA-CRETE products are not available in Canada. Please contact your local PPG sales representative for details.

The statements, technical information and recommendations for the products mentioned herein are based on best available data and practices known to PPG Architectural Coatings, Inc. at the present time.

## CONCRETE AND MASONRY SUBSTRATES

PRIMER INTERMEDIATE TOPCOAT	TILT-UP CONCRETE			
	SURFACE PREPARATION	PRIMER	INTERMEDIATE	TOPCOAT
S ○ S	Prepare surface per SSPC-SP 13 to remove surface contaminants, loose paint, laitance, efflorescence, curing compounds, hardeners and bond breakers. New concrete should cure for at least seven days, and the pH of the substrate must be less than 13 before priming.	PPG PERMA-CRETE® Exterior Solvent Acrylic Masonry Coating 4-9110		PPG PERMA-CRETE® Exterior Solvent Acrylic Masonry Coating 4-9110
S ○ A	Prepare surface per SSPC-SP 13 to remove surface contaminants, loose paint, laitance, efflorescence, curing compounds, hardeners and bond breakers. New concrete should cure for at least seven days, and the pH of the substrate must be less than 13 before priming.	PPG PERMA-CRETE® Pigmented Bonding Coat 4-898		Any PPG PERMA-CRETE® Topcoat
A ○ A	Prepare surface per SSPC-SP 13 to remove surface contaminants, loose paint, laitance, efflorescence, curing compounds, hardeners and bond breakers. New concrete should cure for at least 30 days, and the pH of the substrate must be less than 10 before priming.	PPG PERMA-CRETE® Interior/Exterior Acrylic Masonry Surface Sealer 4-808/4-809		Any PPG PERMA-CRETE® Topcoat
A ○ A	Prepare surface per SSPC-SP 13 to remove surface contaminants, loose paint, laitance, efflorescence, curing compounds, hardeners and bond breakers. New concrete should cure for at least seven days, and the pH of the substrate must be less than 13 before priming.	Self-Priming PPG PERMA-CRETE® Vertical Concrete Stain (VCS) 4-5110		PPG PERMA-CRETE® Vertical Concrete Stain (VCS) 4-5110

F Fluoropolymers

U Urethanes

A Water-Borne Acrylics

E Epoxies

S Specialty Coatings

○ N/A

All PPG PERMA-CRETE products are not available in Canada. Please contact your local PPG sales representative for details.

The statements, technical information and recommendations for the products mentioned herein are based on best available data and practices known to PPG Architectural Coatings, Inc. at the present time.

## WORLD-CLASS PRODUCT LINE

PPG offers a broad and deep product line second to none in the industry. For every application in a restoration project and at every price point, there is a PPG coating ideally suited for the job.

### PRIMERS AND BARRIER COATS

Selecting the right primer for your renovation project is critical to increasing the overall quality and durability of your paint finish. The PPG Building Renewal™ Program offers a range of fluoropolymer, epoxy, acrylic and specialty primers and air barriers designed for a variety of substrates and surface challenges.

### CORAFLON® ADS (AIR-DRY SYSTEM) INTERMIX

A two-component, fluoropolymer coating, *Coraflon* ADS Intermix is the fastest, simplest and most cost-effective way to restore metal panels. With a long life expectancy and superior gloss and color retention, *Coraflon* ADS Intermix system delivers a low-maintenance finish that stands the test of time even under extreme environmental conditions. The *Coraflon* ADS Intermix system is designed to be used on structurally sound surfaces, including architectural metals, curtain walls, standing seam roofs, aluminum windows, doors, handrails and stairs. This includes ferrous metal surfaces, such as water tanks and ornamental entrance ways.

### DURANAR® ADS

A one-component, air-dry fluoropolymer topcoat, *Duranar* ADS is used to restore the color and renew the integrity of the original metal finish. *Duranar* ADS is based on the same resin technology (PVDF fluoropolymer) as PPG *Duranar* factory-applied coil and extrusion finishes. These finishes have been performing well on standing seam roofs in every climate condition for over 40 years. These spray-applied coatings can be used for spot repaints or to refinish an entire building.

### BRP URETHANES

PPG BRP Urethanes are high-performance, two-component coatings used to restore exterior architectural metals and metal roofs. The BRP Urethane Coatings are extremely durable and offer long-lasting color and gloss retention under a wide range of exterior exposures. Ideal for use in creating colorful storefronts or matching a vibrant color sample, PPG BRP Urethanes can provide you with the high-chroma colors and special effects your project needs.

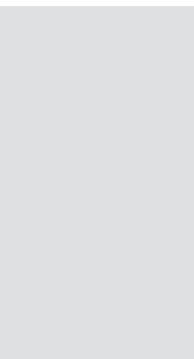
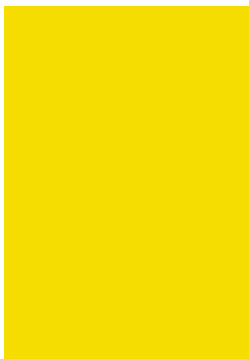
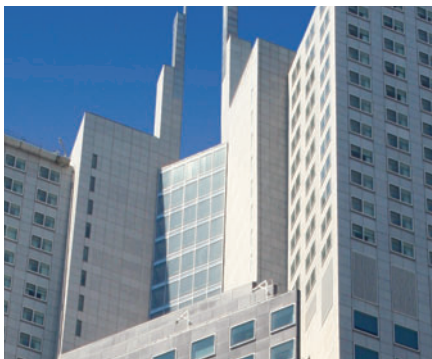
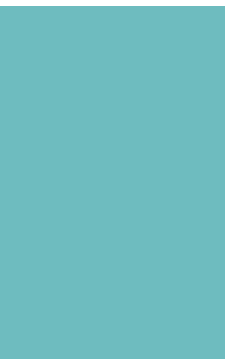
### BRP ACRYLICS

The BRP Acrylic Coatings are an economical choice for a low-VOC, durable water-borne coating to restore existing metal panels and standing seam metal roofs. By choosing BRP Acrylics, you can help extend the useful life of a building or structure. This acrylic is convenient, supplied ready to use, and does not require mixing two components or measuring prior to use.

### PPG PERMA-CRETE®

PPG *PERMA-CRETE* Masonry Coatings provide a complete line of extremely durable and visually appealing protective coatings. The line includes fillers, primers and patching compounds, high builds, vertical and horizontal concrete stains, water repellants and sealers, as well as elastomeric and texture coatings. *PERMA-CRETE* Masonry Coatings perform on all masonry substrates, and the products' advanced technologies provide the best premium concrete protection to enhance the value of your building and add years to its lifetime.





© Michael DeVivo/Emporis



PPG Architectural Coatings • One PPG Place • Pittsburgh, PA 15272 • Technical Service: 1-800-441-9695  
Architect/Specifier: 1-888-PPG-IDEA • [www.ppgbrp.com](http://www.ppgbrp.com)